

*Many thanks to the following people for their help with OCO:*

**William Baez** (Facilities personnel), **Holly Bennett** (Admin. Asst. for Academic Affairs), **Susan Brisson** (Assoc. Director of Admission), **Pedro Cabrera** (Facilities personnel), **Neiza Correia** (Facilities personnel), **Paul Coveney** (Admin. Asst. for Academic Affairs), **Michelle Davis** (Chief Marketing Officer), **Noel Espinal** (Facilities Asst. Director), **Francisco Fernandez** (Facilities personnel), **Marcella Fornagiel** (Admin. Asst. for Academic Affairs), **Alyson Goodrow** (Assoc. Director of Communications), **Steve Hannabury** (Executive V.P. and Treasurer), **Joe Hunter** (Asst. V.P. for External Relations and Director of Communication), **Susan Johanson** (Asst. to Dean of Admission and Financial Aid), **Ellise LaMotte** (Academic Services Director), **Jayme Larochelle** (Facilities Operations Manager), **Vin Manno** (Provost and Dean of Faculty), **Robinson Medrano** (Facilities personnel), **Beth Miaoulis** (Development Officer), **Rick Miller** (President), **Katherine McDonough** (Admin. Asst. for Academic Affairs), **Shannon Paleologos** (Director of Annual Giving and Advancement Services), **Emily Petersell** (Asst. Director of Admission and Financial Aid), **Krissy Raposa** (Director, Family and Alumni Relations), **Emily Roper-Doten** (Dean of Admission and Financial Aid), **Liam Ross-Fitzgibbons** (Asst. Director of Admission and Financial Aid), **John Sullivan** (Program Director, Needham Lions Club), **Nancy Sullivan** (Asst. to the President), **Brenda Wight** (Asst. to the Executive V.P. and Treasurer), **Russ Zacharias** (Facilities Director), Music Program Assistants **Pinar Demetci '17**, **Joseph Lee '19**, and **Bryan Werth '19**.

*About OCO ...*

The Olin Conductorless Orchestra (OCO)—an ensemble, minus conductor—features instrumentalists in leadership and collaborative roles. Dedicated to orchestral performance in the concerted spirit of chamber music, the orchestra forges individual participation, active listening, and group-motivation into performances that have established it as the only conductorless orchestra composed of engineers—in the world! With an essentially flat hierarchy that incorporates an ever-evolving sense of culture and cooperation as a working ensemble, OCO functions as a team of musicians—regardless of position—comprising students, faculty, and external guests, all dedicated to making good music with intensity, camaraderie, excitement, and humor.



1000 Olin Way | Needham, MA 02492

# OCO

## Olin Conductorless Orchestra

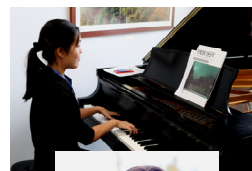


**Saturday, December 17, 2016**  
**Powers Hall at the Needham Town Hall**  
**Needham, MA**



## OCO

Serena Chen, Shreya Rangarajan, Maggie Rosner,  
Sarah Walters, Judy Xu, Nathan Yee, Lydia Zuehsow—violins  
Anne Ku—viola  
Jeremy Garcia, Duncan Hall, Hailey Lee, Kian Raissian,  
Emma Westerhoff—cellos  
Katie Hite, Eric Miller—flutes  
Jeremy Ryan—piccolo and flute  
Kai Levy, Taylor Sheneman—oboes  
Stella Joo—clarinet  
Meg Lidrbauch, Sunny Shroff—bass clarinet  
Diego Alvarez—pocket trumpet  
Diego Alvarez, Paul Nadan—trombones  
Joe Sutker—bass trombone and glockenspiel  
Emily Yeh—piano  
Joseph Lee—timpani



Emily Yeh, '19, is from University Place, Washington. She has been playing piano for about 15 years. She plans to major in Engineering with a concentration in Computing. She enjoys elephants, watching people, and art. She is really bad at acting normal.



Lydia Zuehsow, '19, from Harwood Heights, Illinois. She has been playing violin for 14 years, 13 of them willingly. In her spare time, she enjoys sketching, pottery, and defying death as she leaps about on a patch of frozen H<sub>2</sub>O. As a Robo-E, she will probably instigate the coming robot apocalypse.



**OCO, the Music Program, and Olin College express deep appreciation and gratitude to Carol Wu and Roger Shaffer of Roger's Piano in Natick for providing the Yamaha concert grand for tonight's performances. Roger's Piano has been in business for over 30 years and is dedicated to giving its customers the best musical experience possible.**

# The Olin Conductorless Orchestra

December 17, 2016

## Program

Duetto in G major for Flute and Violin <i>Kathryn Hite, flute and Shreya Rangarajan, violin</i>	C. P. E. Bach
Poems of the Sea (III. At Sea) <i>Emily Yeh, piano</i>	Ernest Bloch
Suite No. 4 in Eb (I. Prelude) <i>Kian Raissian, cello</i>	J. S. Bach
Rhapsody in Blue <i>Anne Ku, piano</i>	George Gershwin

*Short Intermission (10 min.)*

Waltz No. 2 from the <i>Suite for Variety Orchestra</i>	Dmitri Shostakovich*
Selections from <i>An American in Paris</i>	George Gershwin*
Overture to the <i>Magic Flute</i>	Wolfgang Amadeus Mozart*

### Mix and stir ...

**OCO Navigators:** Serena Chen and Eric Miller

**Sibelius Transcribers:** Anne Ku, Duncan Hall, Katie Hite, Lucky Jordan, Justin Kunimune, Joseph Lee, and Shreya Rangarajan


**Adjudication and professional coaching:** Thomas Hill (principal clarinet emeritus, Boston Philharmonic), Emileigh Vandiver (University of New Hampshire), Sam Solomon (Boston Conservatory), Charles Peltz (New England Conservatory), Jae Lee (concertmaster, Boston Philharmonic), Diana Dabby (OCO professor)

**Re-orchestrations:** Diana Dabby


---

\***Shostakovich** scored this version of Waltz 2 for 2 flutes, oboe, 3 clarinets, bass clarinet, alto saxophone, 2 horns, 3 trumpets, 2 trombones, timpani, glockenspiel, and strings. **An American in Paris** calls for 3 flutes, piccolo, 2 oboes, English horn, 2 clarinets, bass clarinet, 2 bassoons, 4 horns, 3 trumpets, 3 trombones, tuba, timpani, percussion, and strings (34 violins, 14 violas, 12 cellos, 8 double basses). **Mozart** wrote the overture to his opera *The Magic Flute* for 2 flutes, 2 oboes, 2 clarinets, 2 bassoons, 2 horns, 2 trumpets, alto and tenor trombones, bass trombone, timpani, and strings (16 violins, 6 violas, 4 celli, 2 double basses).


**OCO** has always had an unusual combination of instruments so these pieces have been re-orchestrated to suit the current instrumentation: 7 violins, viola, 5 cellos, 3 flutes, piccolo, 2 oboes, clarinet, 2 bass clarinets, 2 tenor trombones, bass trombone, piano, glockenspiel, and timpani.




Taylor Sheneman, '19, is from Highwood, Illinois. He has been playing oboe for 11 years, and piano for 15. Apart from music performance, he enjoys parkour, mixology, electronic music composition, and making stuff. Taylor is an Electrical and Computer Engineering major, because computers are going to be a great thing to understand during the robot apocalypse.



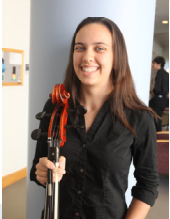
Sunny Shroff, '18, from Nashua, NH, has been playing the bass clarinet for 8 years. He has performed with his middle and high school bands as well as in the NH All State and Chamber bands. In addition to music, he enjoys playing pool and watching TV shows on Netflix.




Joe Sutker, '18 is from Boonton Township, NJ. He plans on majoring in Engineering with a concentration in Computing. While he dabbles in many instruments, he is playing Bass Trombone and various percussion for OCO. While not playing instruments, he is singing, acting, spinning fire staff, playing videogames, and doing math. A lot of it.




Sarah Walters, '17, is from Boulder, CO and plans to major in engineering with a concentration in computing. She has been studying violin for thirteen years and piano for sixteen, and she has performed with the Boston Philharmonic Youth Orchestra, the Mercury Orchestra, and with various all-state orchestras and chamber groups.



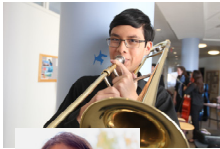
Emma Westerhoff, '20, is from Scottsdale, Arizona. She has been playing cello for seven years, and has studied under both classical and fiddle instructors. She also plays upright and electric bass in jazz ensembles. With plans to study Electrical Engineering, Emma also enjoys baking, origami, and getting lost in the desert.



Judy Xu, '18, is from Toronto, Canada. She is studying Mechanical Engineering at Olin, but likes coding and wants to go into Aerospace. She started piano in kindergarden because she liked the piano teacher. She started violin in middle school because ensembles are fun. She really likes watermelons and Chopin.



Nathan Yee, '19, is from Alameda, California. He has played violin for 12 years. He has performed in numerous orchestras, most notably, Oakland Youth Orchestra. He is planning to major in electrical and computer engineering.



Diego Alvarez, '20, is from Kirkland, Washington. He started playing piano in 5th grade, and later picked up trombone, composition, guitar, and, most recently, trumpet. He plans to study either mechanical or robotics engineering.



Serena Chen, '19, is from Plano, Texas, and is planning to major in Engineering with Computing. She has been playing violin for 9 years. In her spare time, she enjoys drawing snails.

Jeremy Garcia, '19, is from Dallas, Texas and is majoring in some kind of Engineering. He has been playing the cello for 13 years and has enjoyed playing with various all-state, chamber, and youth orchestras.

Duncan Hall, '19, is from Camden, Maine. He has played his cello in a variety of ensembles with peers and mentors, sharing the Berklee Performance Center stage in 2012 with Mark O'Connor and the other 2011 recipients of the Daniel Pearl Memorial Instruments. He plans to study software engineering and development at Olin, and continue to pursue musical studies throughout his time here.

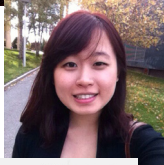
Kathryn Hite, '18, is from Temperance, MI, and is majoring in Engineering with a concentration in computing. She has been playing the flute for 11 years and has performed with the Toledo Youth Orchestra and other concert groups.

Stella Joo, '17, from Springfield, VA, has been playing the soprano clarinet since middle school. She has also played the piano, tenor saxophone, and bass clarinet in high school. She plans to major in Business with concentrations in Accounting and Business Analytics at Babson College. In her free time, she also enjoys hiking and traveling.

Anne Ku, '19, from Palo Alto, California, has been an active musician for over 12 years. She's planning to study Electrical and Computer Engineering.

Joseph Lee, '19, from Huntsville, Alabama. He has been playing piano for 12 years and is vastly enjoying playing timpani and xylophone in OCO. He is majoring in Electrical and Computer Engineering and spends most of his free time doing all sorts of different projects ranging from building harps to building remote control airplanes.

Hailey Lee, '19, is from McLean, VA, and studies Business Administration, planning to concentrate in Data Analytics, at Babson College. She has played the cello since she was 10 years old. She likes city exploring, food, traveling, playing the piano, and socializing.



Kai Levy, '18, is from Seattle, WA. He plays oboe, and hopes you enjoy it.



Meg Lidrbauch, '17, is from Hamilton, MA, where she first discovered the wonder and mystique that is the bass clarinet. She has been playing bass clarinet for eight years. She is studying Environmental Systems Engineering with a particular interest in sustainability and renewable energy. She loves that the Olin Conductorless Orchestra gives her the opportunity to continue with music and grow as both an instrumentalist and a person.



Eric Miller, '19, is from Granville Ohio. He has been playing flute for 11 years in Honor Bands, orchestras, small ensembles, and now the OCO. He is majoring in Robotics, and is one of the OCO Navigators this year.



Paul Nadan, '20, is from San Carlos, California. He began playing the euphonium in 5th grade, and picked up the trombone two years later. He plans to study aerospace engineering during his time at Olin.



Kian Raissian, '20, is from Houston, TX. He has studied cello since he was 5 years old. He has played in various ensembles including the Houston Youth Symphony, the Texas All State orchestras, the Houston Symphony, and the Helios quartet, which he founded. He is also a recipient of the Texas Young Masters Award and a winner of the Houston Young Artists Competition. Additionally, he was a finalist in the Houston Symphony League Concerto Competition and a soloist in a master-class held by the Israeli Philharmonic. He is still technically undecided regarding his major, but is leaning towards a path in Engineering with Product Design.



Shreya Rangarajan, '18, is from Baltimore, MD, and is majoring in Engineering with a concentration in Bioengineering. She started her performing arts training at the Peabody Conservatory and has been playing the violin, singing, and dancing for 15 years. When she's not involved in arts, she likes to socialize, play sports, and watch Netflix.



Maggie Rosner, '20, is from Tacoma, Washington. She has played the violin for 9 years and while at Olin is planning to major in either Mechanical or Electrical Engineering with a focus in sustainability.



Jeremy Ryan, '20, is from Medical Lake, Washington, and majoring in Electrical and Computer Engineering. He began studying piano at age 5, and has since taken up flute, piccolo, mallet percussion, and accordion. Jeremy has been composing music for at least six years, including a piece entitled "Tension" that was performed by a concert band when he was in eighth grade. Outside of music, he enjoys unicycling, drawing, and digital art.